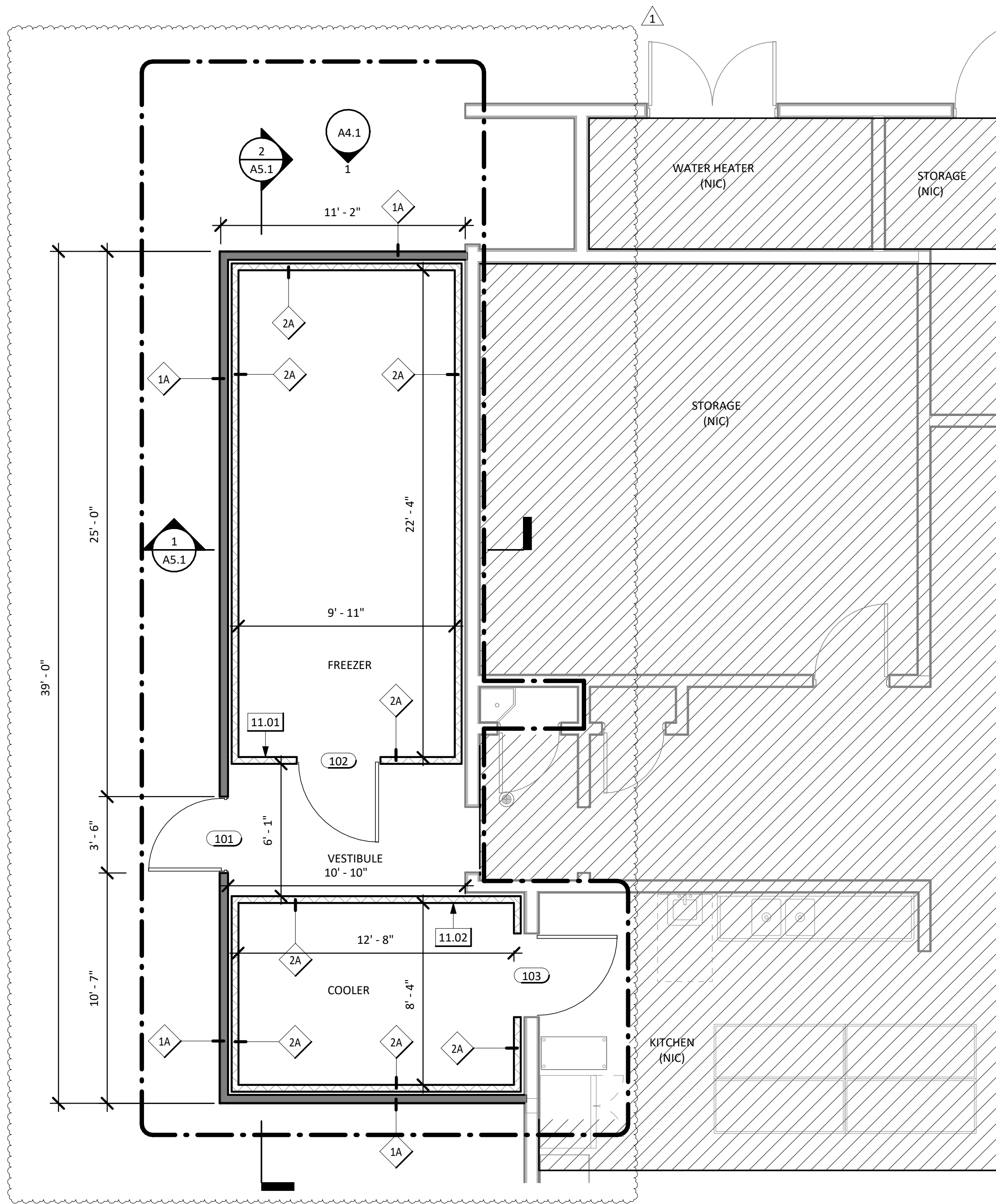


1 DEMOLITION FLOOR PLAN
1/4" = 1'-0"



2 PROPOSED FLOOR PLAN
1/4" = 1'-0"

FLOOR PLAN NOTES

- CONTRACTOR TO FIELD VERIFY ALL DIMENSIONS.
- ALL ITEMS REFERENCED ARE NEW UON.
- REFER TO GENERAL NOTES ON G1.0 - G1.3 FOR FURTHER INFORMATION & REQUIREMENTS.
- PATCH AND REPAIR WALL AND FLOOR FINISHES AS REQUIRED.
- ASBESTOS AND LEAD HAZARDOUS MATERIALS ARE PRESENT IN THE BUILDING AND ARE KNOW TO BE PRESENT IN THE FOLLOWING ITEMS BUT NOT LIMITED TO: DOORS, FRAMES, EAVES, PLASTIC, FLOOR TILE, MASTIC, ETC. ABATEMENT IS REQUIRED WHERE DEMOLITION OCCURS. REFER TO THE HAZARDOUS MATERIALS REPORT & GENERAL NOTES ON SHEET G1.1 FOR ADDITIONAL INFORMATION.
- HAZARDOUS MATERIAL REPORT IDENTIFIES TYPICAL LOCATIONS OF HAZARDOUS MATERIALS. CONTRACTOR SHALL VERIFY ALL LOCATIONS OF HAZARDOUS MATERIALS PRIOR TO COMMENCING WORK.
- THE CONTRACTOR SHALL HIRE A SITE LOCATOR TO VERIFY LOCATION OF ALL UTILITIES PRIOR TO WORK. THE CONSTRUCTION SHALL BE AWARE OF POTENTIAL HAZARDS FROM DEMOLITION WORK NEAR UTILITIES, PIPES AND CONDUIT ENCOUNTERED WHEN DEMOLISHING PARTITIONS AND AREAS WHICH ARE TO REMAIN IN USE SHALL BE REROUTED AND CONCEALED. THOSE WHICH ARE TO BE ABANDONED SHALL BE CAPPED AND CONCEALED.
- REFER TO FINISH SCHEDULE ON A8.1.

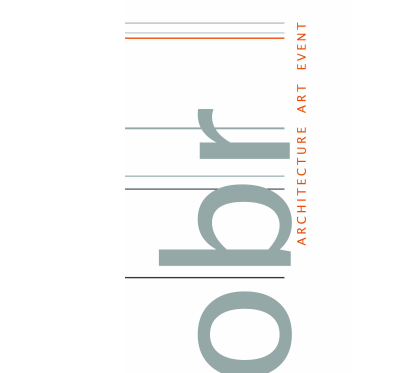
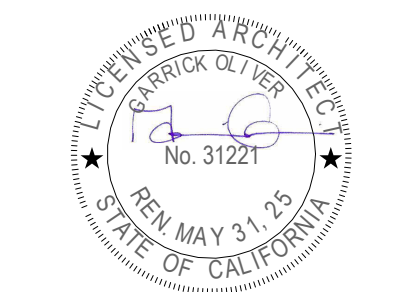
LEGEND

---	AREA OF WORK
---	(E) TO REMAIN
---	(E) TO BE REMOVED
---	(E) WALL TO REMAIN
---	(N) WALL - SEE WALL SCHEDULE ON A8.1
---	(N) INSULATED WALL PANELS PER MFG. - SEE WALL SCHEDULE ON A8.1
---	(E) DOOR TO REMAIN
---	DOOR NUMBER - SEE SCHEDULE ON A8.1
---	WALL TYPE NUMBER - SEE SCHEDULE ON A8.1
---	NOT IN SCOPE

KEYNOTES

- | | |
|-------|--|
| 2.07 | (D) DOOR FRAME, (E) DOOR TO BE SALVAGED, REFINISHED AND REINSTALLED |
| 2.18 | (D) CURB & FLASHING |
| 2.32 | (D) WALK-IN FREEZER DOOR - PER MFG |
| 2.35 | (D) COOLER DOOR - PER MFG |
| 2.57 | (D) WALK-IN FREEZER AND COOLER AND ASSOCIATED COMPONENTS IN ENTIRETY |
| 11.01 | WALK-IN FREEZER - PER MFG |
| 11.02 | WALK-IN COOLER - PER MFG |

FOR DSA REVIEW ONLY -
NOT FOR CONSTRUCTION



BOARD OF EDUCATION

PREPARED FOR THE

obrARCHITECTURE
2419 EL CAJON BLVD., SAN DIEGO, CA 92104

DEMOLITION AND PROPOSED FLOOR PLAN

SAN DIEGO UNIFIED SCHOOL DISTRICT
KITCHEN MODIFICATIONS GROUP 6
BELL MIDDLE SCHOOL
620 BRIARWOOD RD,
SAN DIEGO, CA 92139
DSA SUBMITTAL SET

PROJECT NO. SDUF-006A

R.S. A.P.

FILE NAME

DATE 04/09/2025

REVISIONS
1 04/23/25

SHEET NO.

A1.1